

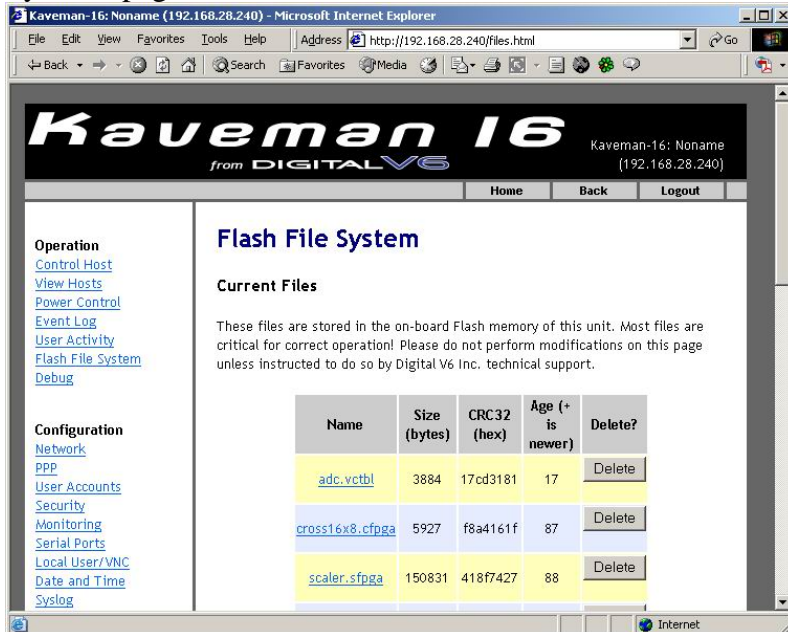
How-To Upgrade System Firmware on K1/8/16

Requirements:

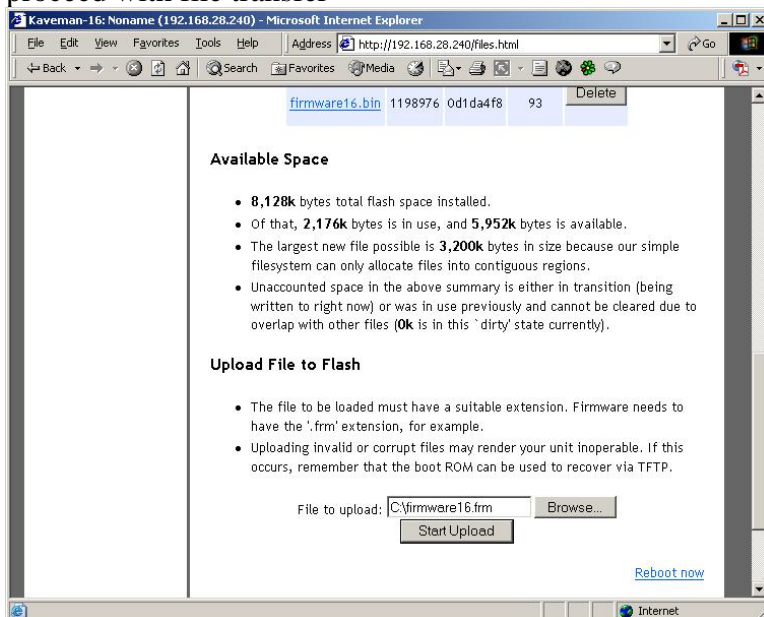
- All remote control sessions are disabled
- Attached Servers should not be rebooted while Kaveman is being upgraded

Upgrading System Firmware (same procedure for K1/8/16):

1. Unzip upgrade package to your local computer and review release notes
2. Using the same computer access Kaveman web interface using the root account and access “Flash File System” page



3. Locate system firmware file with extension .frm using the “Browse” button and select “Start Upload” to proceed with file transfer

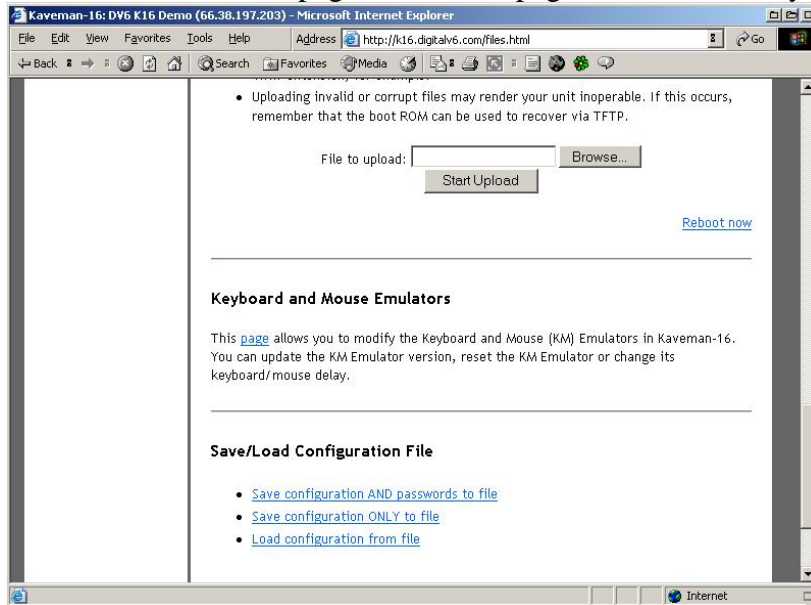


4. After Upload is completed reboot the system using the “Reboot now” link on the same page (use this link as a hardware reset will not load all files properly)
5. After restarting Kaveman should not be used in the first 5-10 as performance will be sluggish
6. This will also upload the newest KM firmware that came with the system firmware package into flash but an upgrade has to be performed separately

How-To Upgrade KM Firmware on Kaveman 16

Upgrading KM Firmware:

1. Caution: Upgrading KM emulator may require you to reset servers as keyboard and mouse disconnect will occur since the individual KM emulation processor has to be reprogrammed and reset.
2. If necessary, upload new KM firmware extension “.picfrm” to system flash using the same method as uploading the system firmware package but a reboot is not required
3. Access Kaveman web interface using root account and select “Flash File system” page and scroll towards the end of the page and select “page” link under “Keyboard and Mouse Emulators” section



4. Select “Update powered KM Emulators” to upgrade only channels connected to powered servers (this process may take up to 20 minutes depending on how many channels are powered). If you do not wish to upgrade certain channels, disconnect server connection on those channels before this process
5. Select “Update all KM emulators” to upgrade all channels.

